

# L'écriture par la lumière

Au travers différents regards de photographes - par Vincent MARTIN (Photomavi)



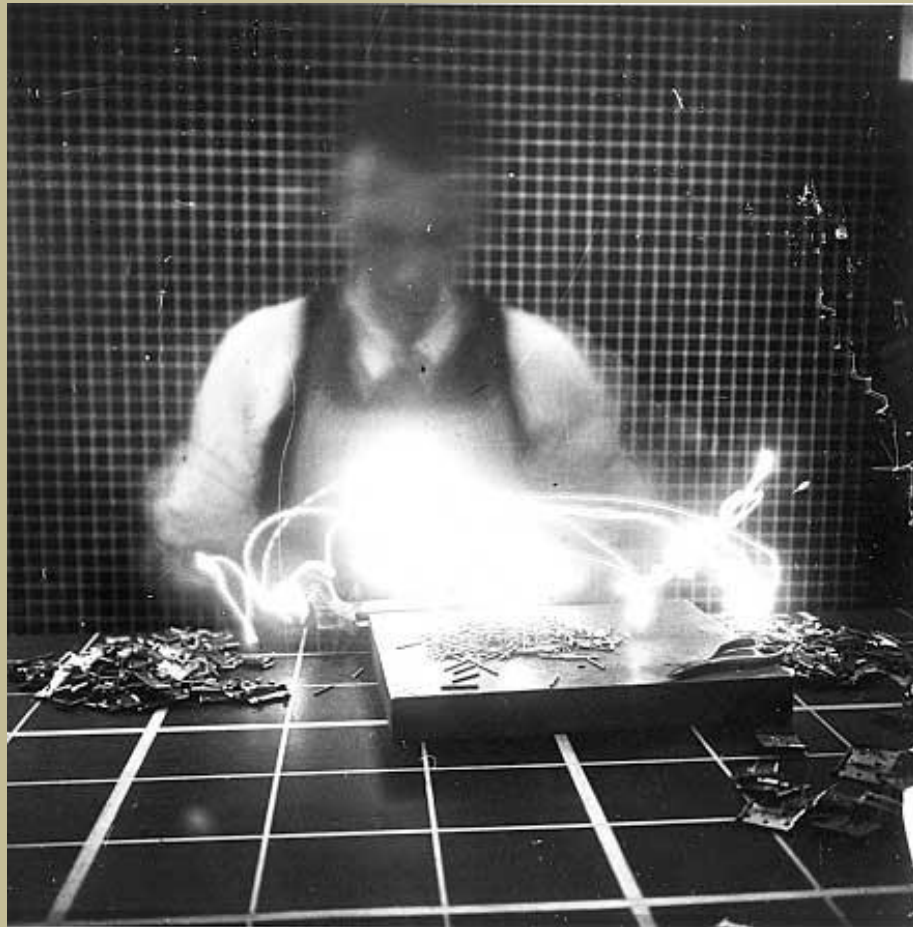
Lightgraff et light-painting...

DEMENY AND QUÉNU  
(Marey's laboratory),  
*Pathological walk from in  
front, made visible by  
incandescent bulbs fixed to  
the joints,*  
circa 1889,  
Archives  
of the Collège de France.



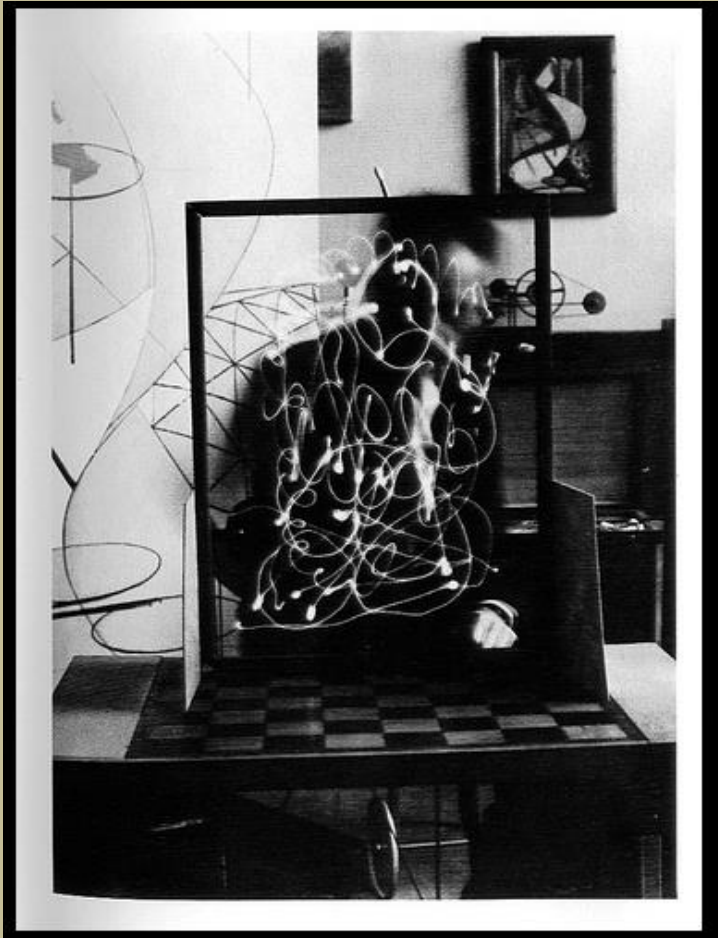
1914

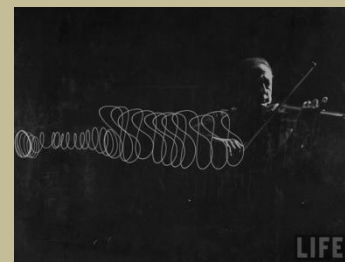
© Frank Gilbreth



1935

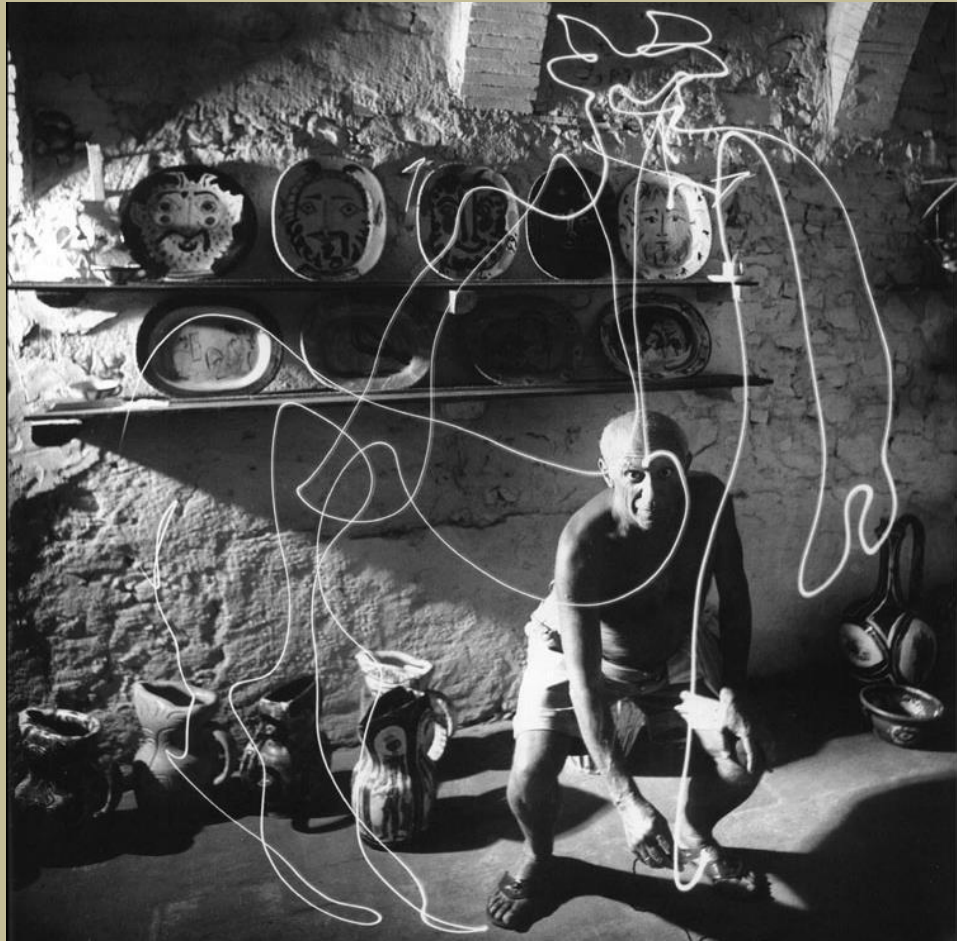
© Man Ray



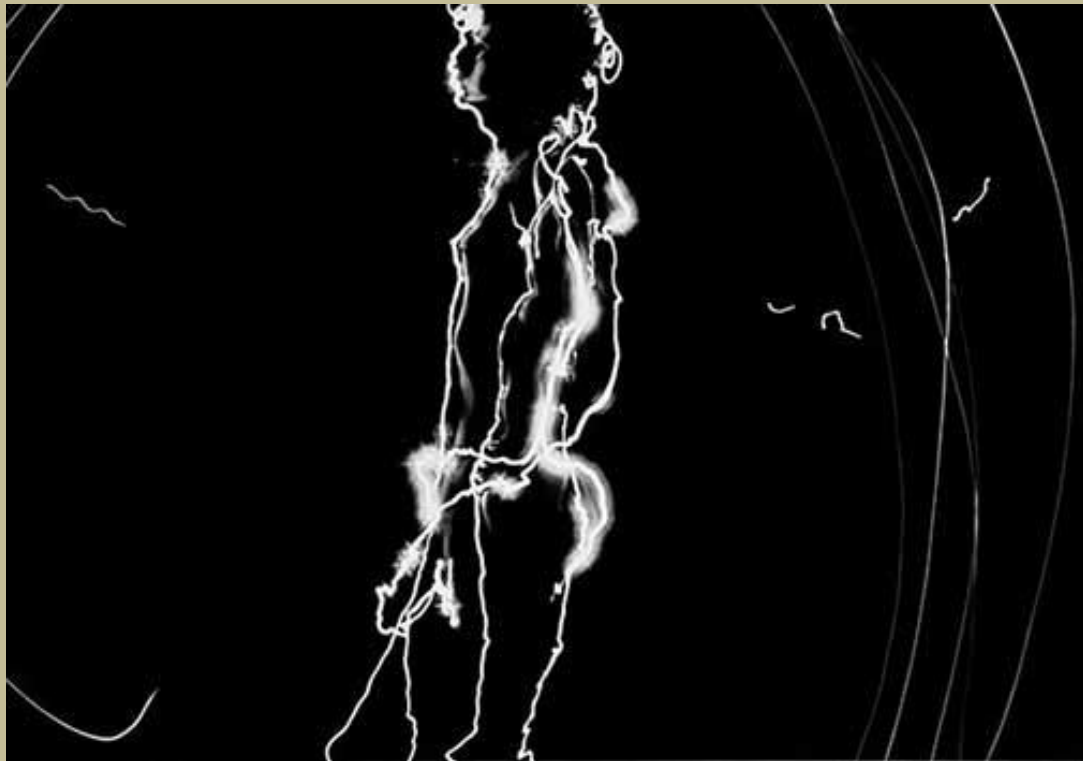


-1949

© Gjon Mili



LIFE



1977

© Dean Chamberlain





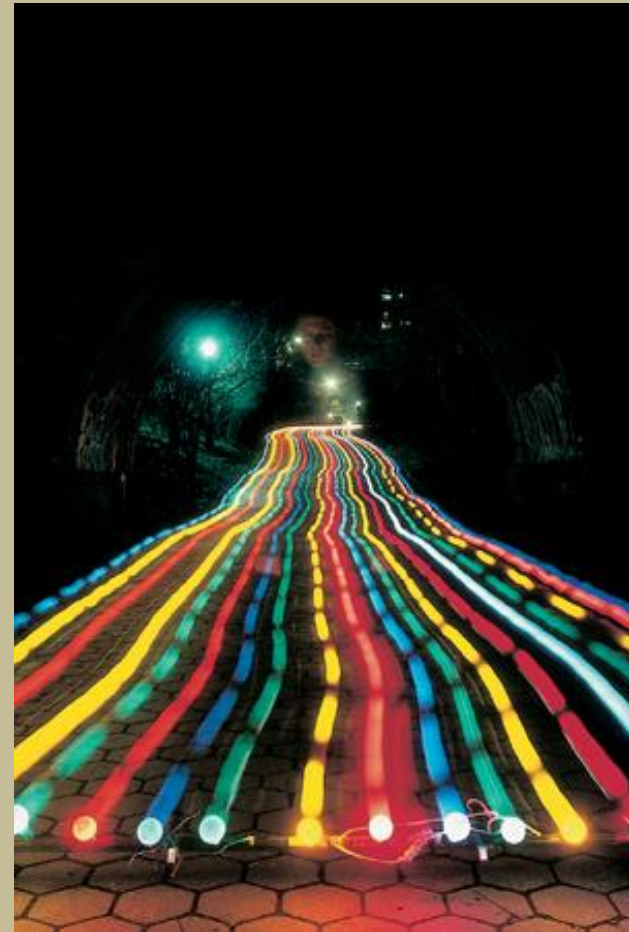
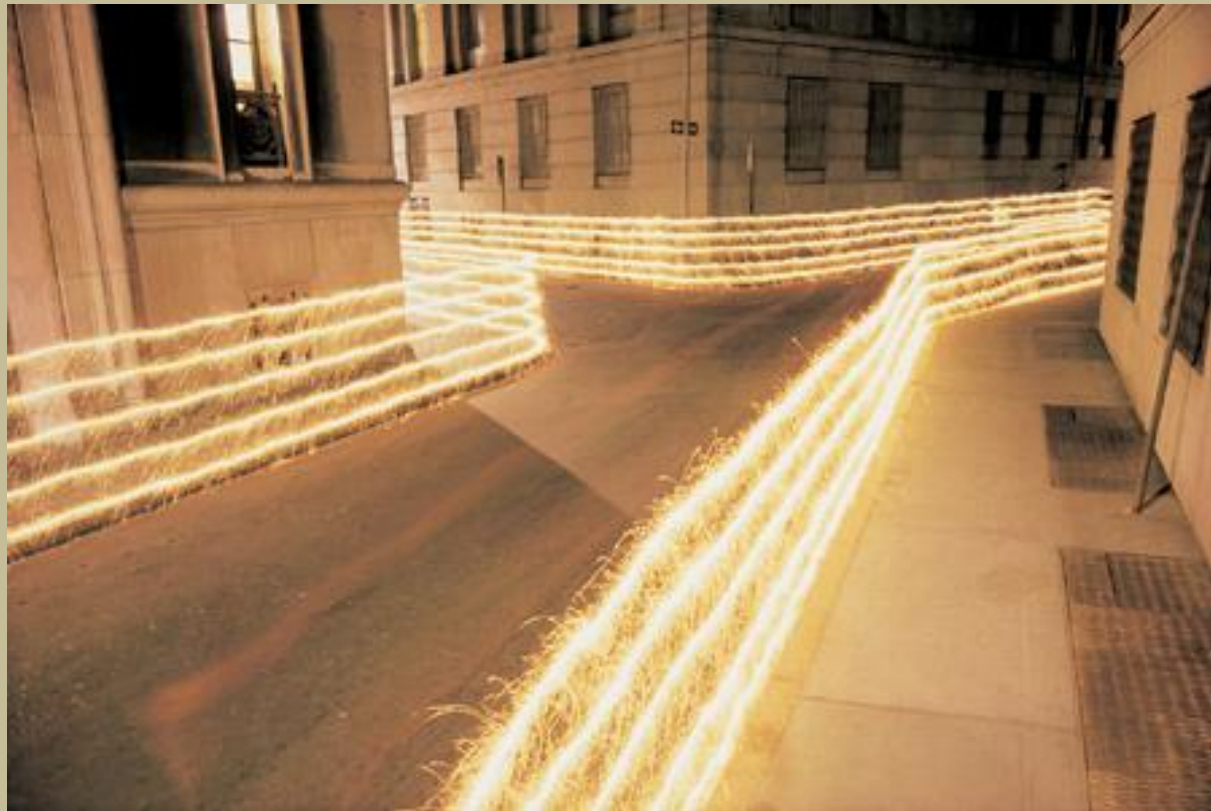
1977

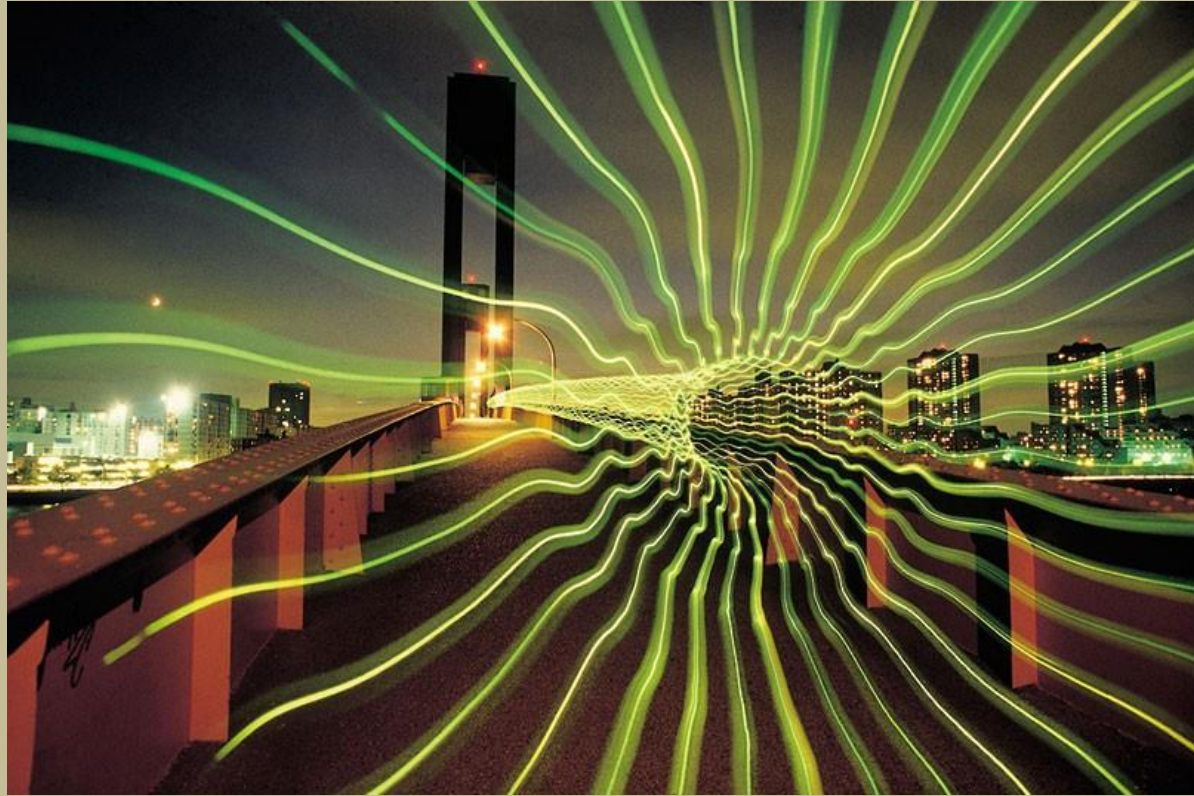
© Dean Chamberlain



1976-1980

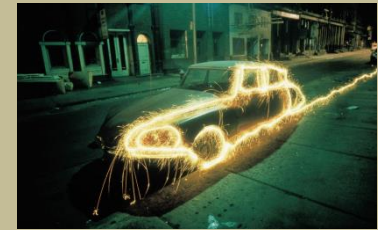
© Eric Staller





1976

© Eric Staller

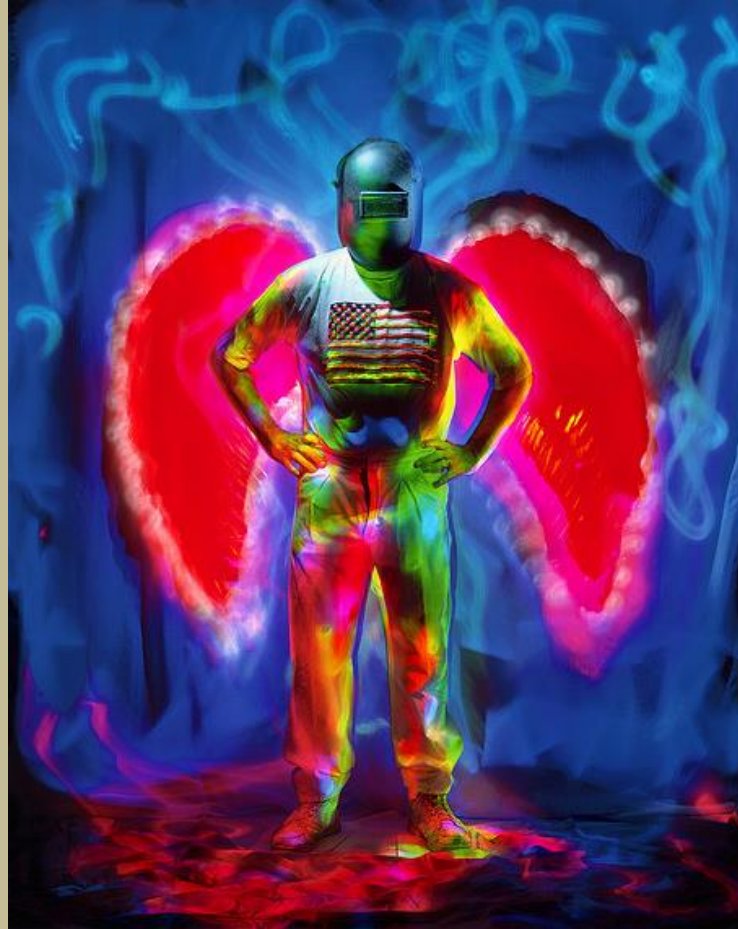




(1980) 1988-

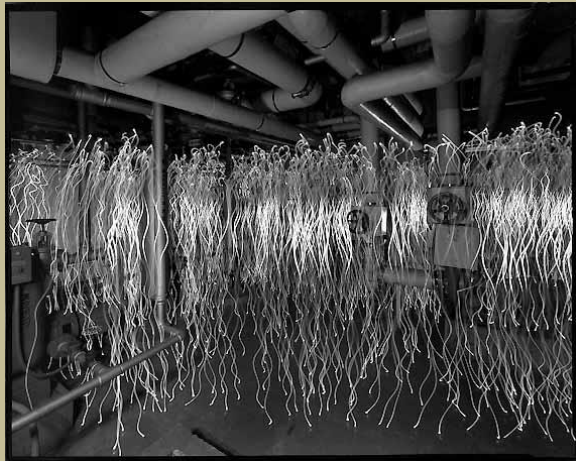
© Vicki DaSilva





1988

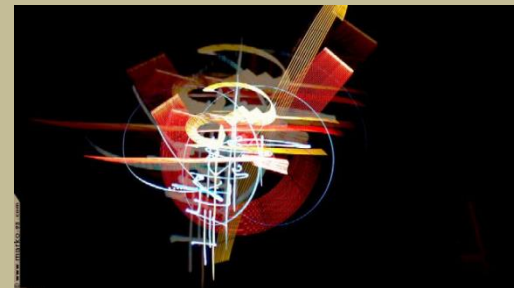
© Tokihiro Sato

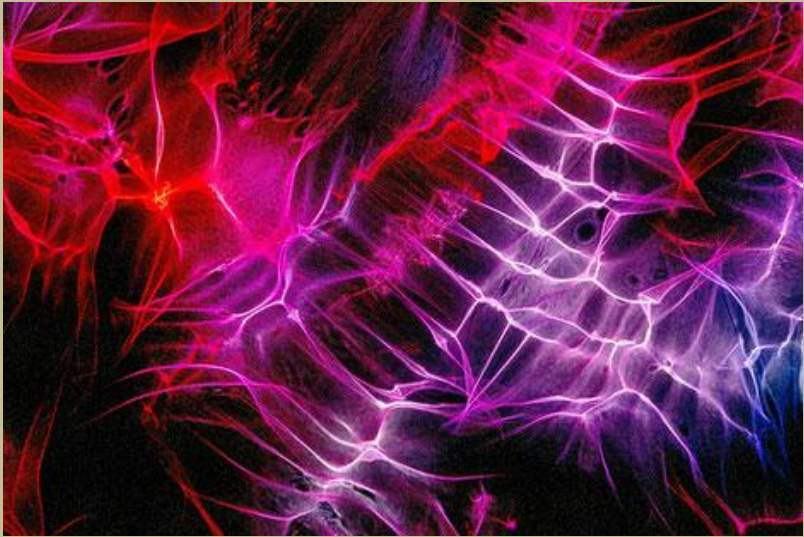






www.marco-93.com



















# L'écriture par la lumière

Au travers différents regards de photographes - par Vincent MARTIN (Photomavi)

